

Name _____

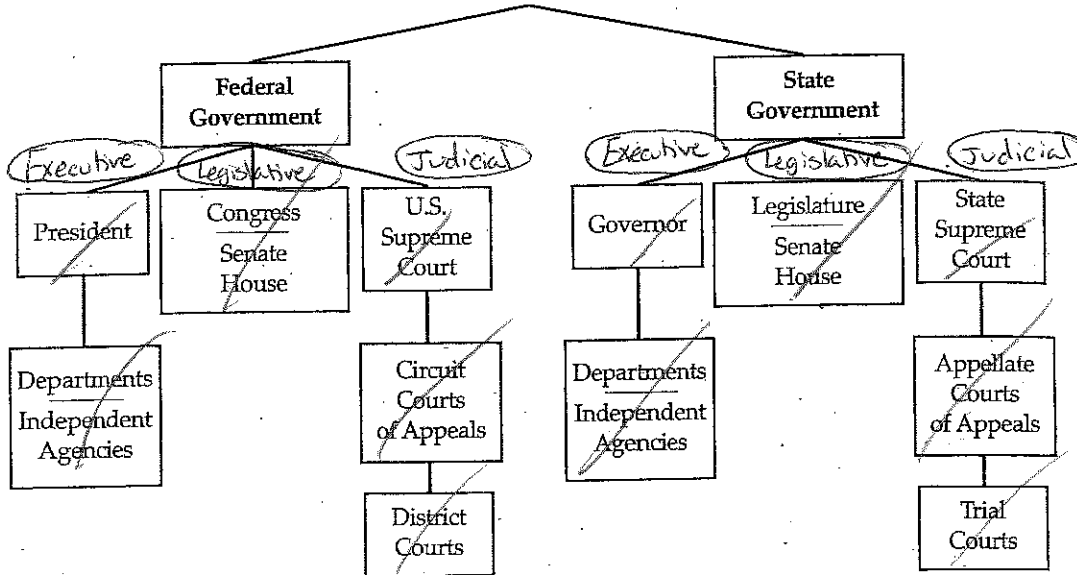
Hour _____

Illinois Constitution Guided Notes

Ratified in 1970

Compare and contrast state and federal government. Look at the flow chart and then fill out the Venn diagram.

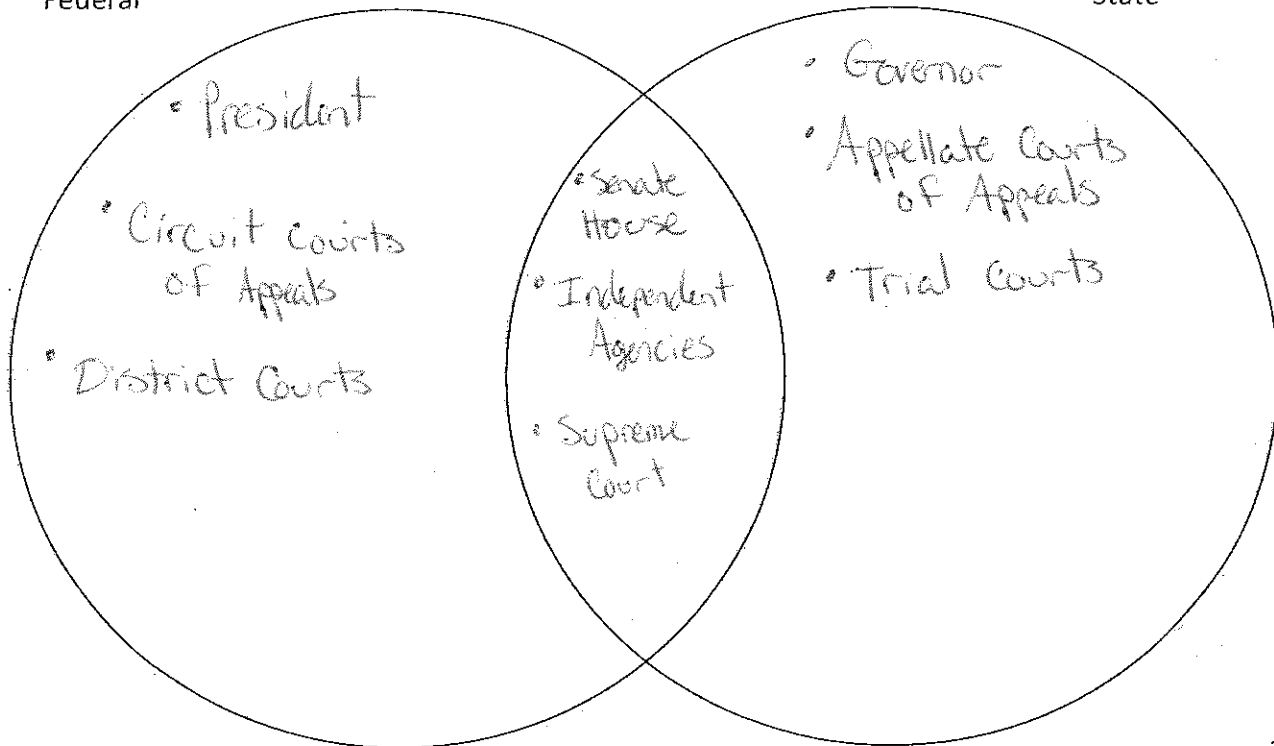
U.S. CONSTITUTION



Both have:
• 3 branches
• Same levels

Federal

State

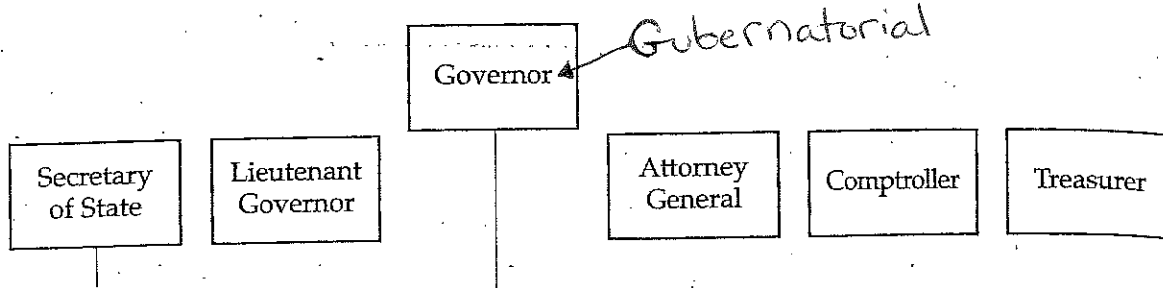


Name _____

Hour _____

(p. 13 in Illinois handbook)

EXECUTIVE BRANCH



Position	Main Function
Governor	- Chief executive ↳ responsible for administration ↳ signs bills into law
Lieutenant Governor	- Comparative to the vice president ↳ serves on various committees education reform, rural affairs
Secretary of State	- direct services to Illinois citizens ↳ drivers' license ↳ organ donors
Attorney General	- Lawyer for the state ↳ defends rights of citizens ↳ upholds state law
Comptroller	- Chief fiscal officer (\$) ↳ into \$ out of state payments
Treasurer	- Invests state money

Why is the position of the comptroller necessary?

Where is the State capital?

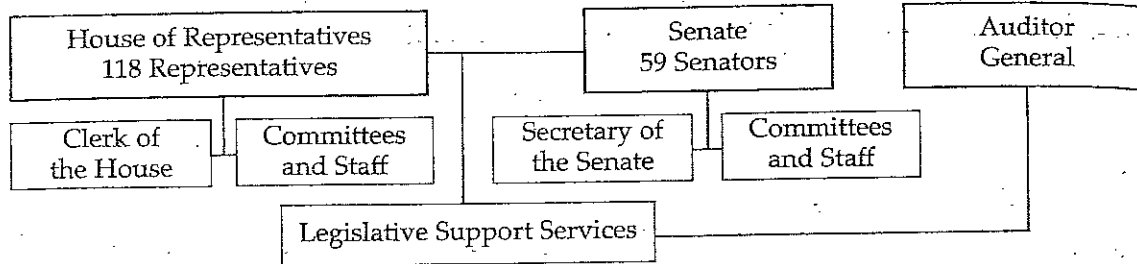
Springfield

Name _____

Hour _____

(p. 26 in Illinois handbook)

LEGISLATIVE BRANCH



The legislative power of the State of Illinois is vested in the General Assembly.

Powers of the General Assembly	
House of Representatives	Senate
<ul style="list-style-type: none">• Sole power of impeachment• Enacting, amending, or repealing laws	<ul style="list-style-type: none">• Adjudicator (judge) for impeachment• approve gubernatorial appointments

Senate President

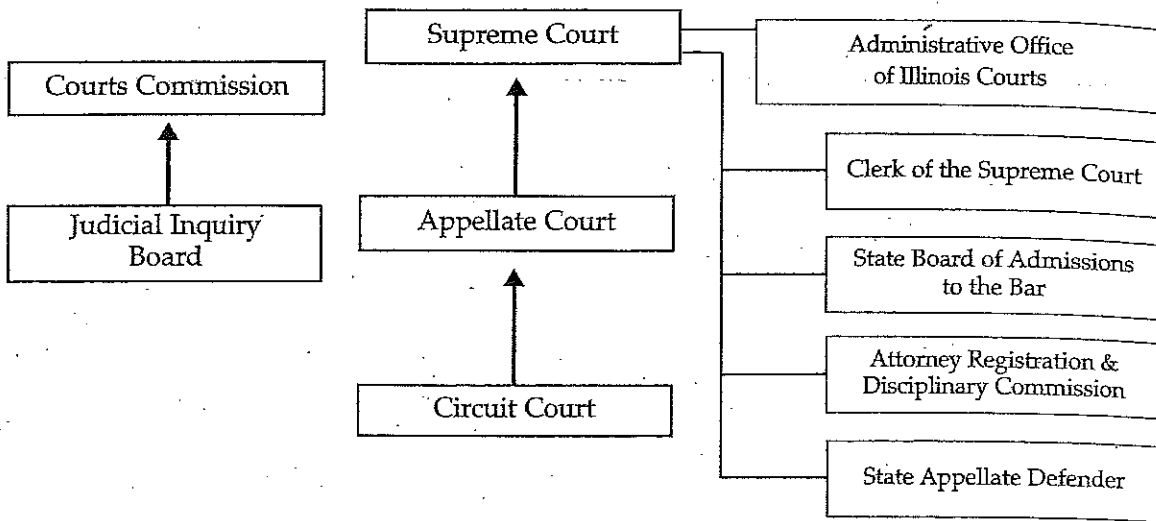
Speaker of the House

Name _____

Hour _____

(p. 53 in Illinois handbook)

JUDICIAL BRANCH



How many Supreme Court Justices does Illinois have?

7 Compared to 9 on the U.S. Supreme Court (SCOTUS)

How long is the term of an Illinois Supreme Court Justice?

10 years
↳ run for reelection